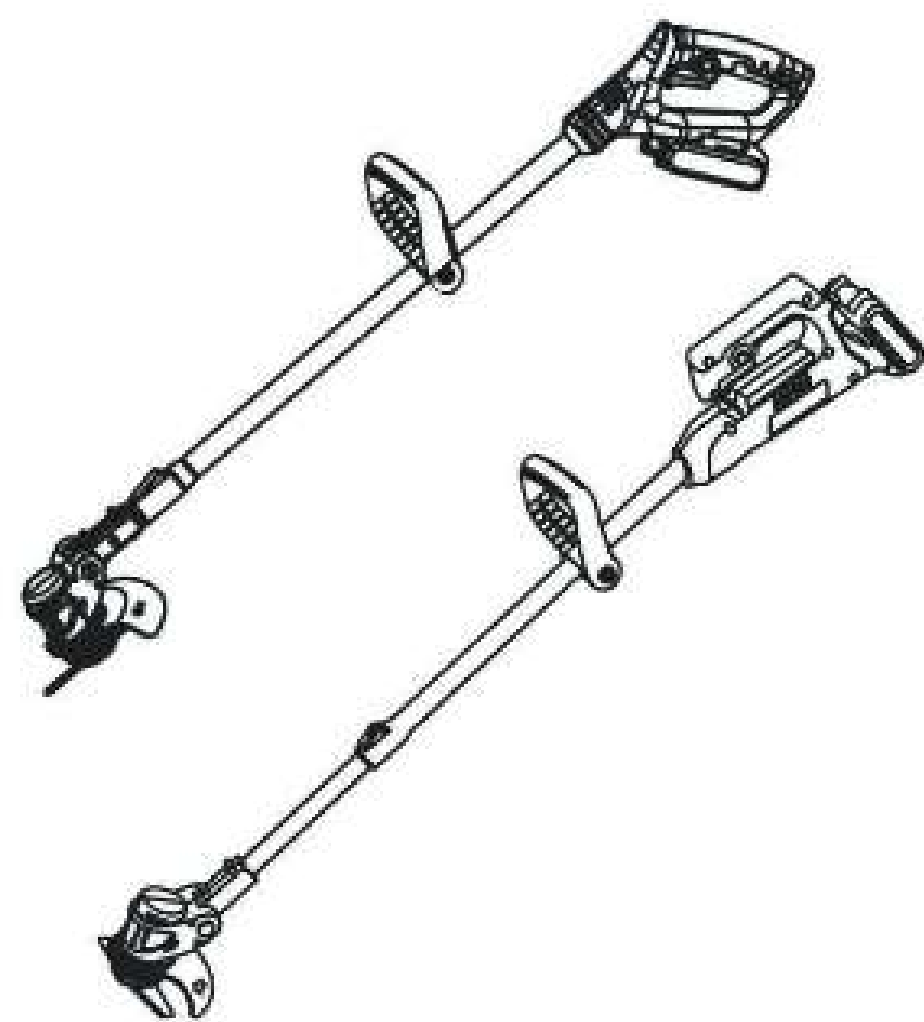


# Electric Lawn Mower Manual



Before using this product, be sure to read through and fully understand this manual carefully before using, maintaining and maintaining the machine. We reserve the right to change product specifications according to product improvement needs.

## Safety Matters

1. Prohibit children from using this equipment.
2. Use equipment in the following environments: sufficient light, no one else in the mowing area.
3. Grounds with steel pipes and many stones are forbidden to be used in rainy days.
4. Check the equipment carefully before use. If it is found that the equipment is damaged or worn out, first replace the spare parts and then use the equipment.
5. Don't wear loose clothes when using. At the same time, hair, hands and feet are far away from the running parts of the equipment.
6. It is forbidden to expose the equipment to rainy days or humid places so as to prevent water from entering batteries and motors from causing damage.
7. The power supply must be disconnected when unattended equipment, obstacle clearance, abnormal vibration of equipment and blade replacement are needed. Wait until the blade stops working completely before doing other operations on the equipment.

## Product Details

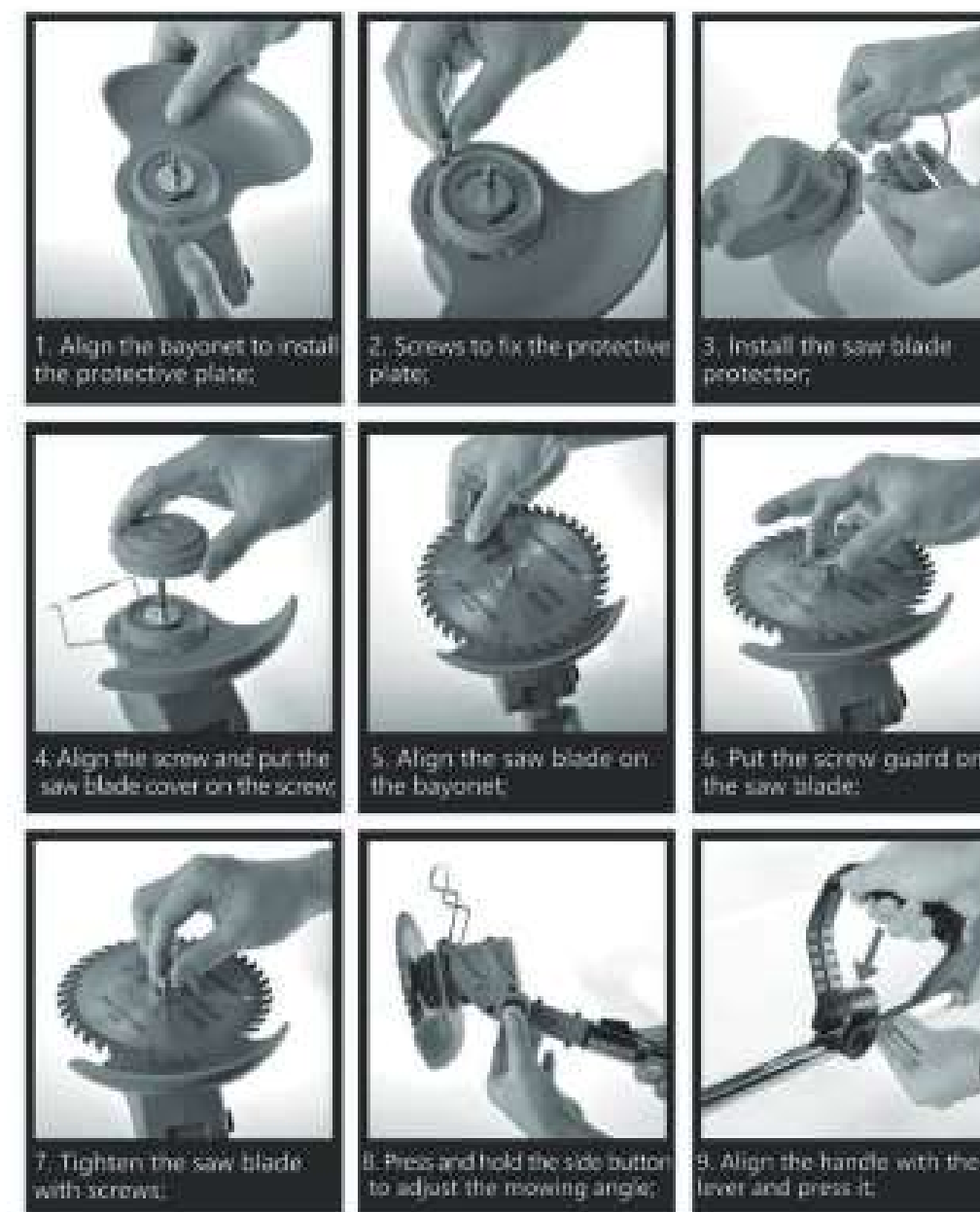


Charging time: 30/1 hour
Material: Steel pipe/aluminium pipe, ABS engineering plastics
Battery: 21-98V Lithium battery no-load
Time: about 2 hours/3 hours
Standard accessories: batteries, chargers, blades

2

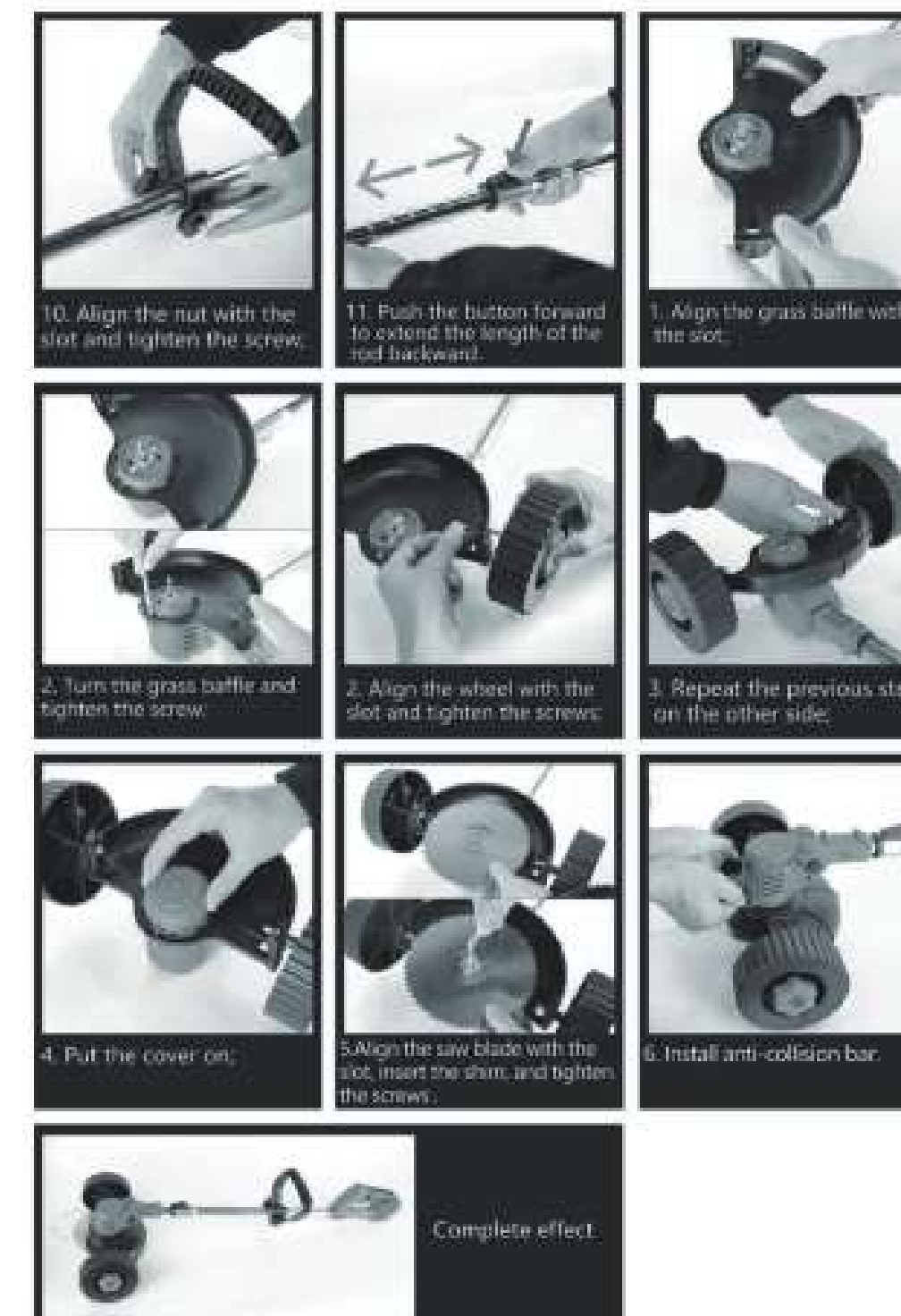
! This machine is suitable for family use, only suitable for mowing grass in garden lawn.

## Installation guide



3

## Installation guide



4

! Note: The auxiliary wheel accessories are an add-on package and may need to be purchased separately. The actual items received in the package shall prevail.

## Installation guide



! Hinweis: Die Stützradzubehöerteile sind ein Zusatzpaket und müssen möglicherweise separat erworben werden. Der tatsächlich im Paket erhaltene Artikel ist maßgebend.

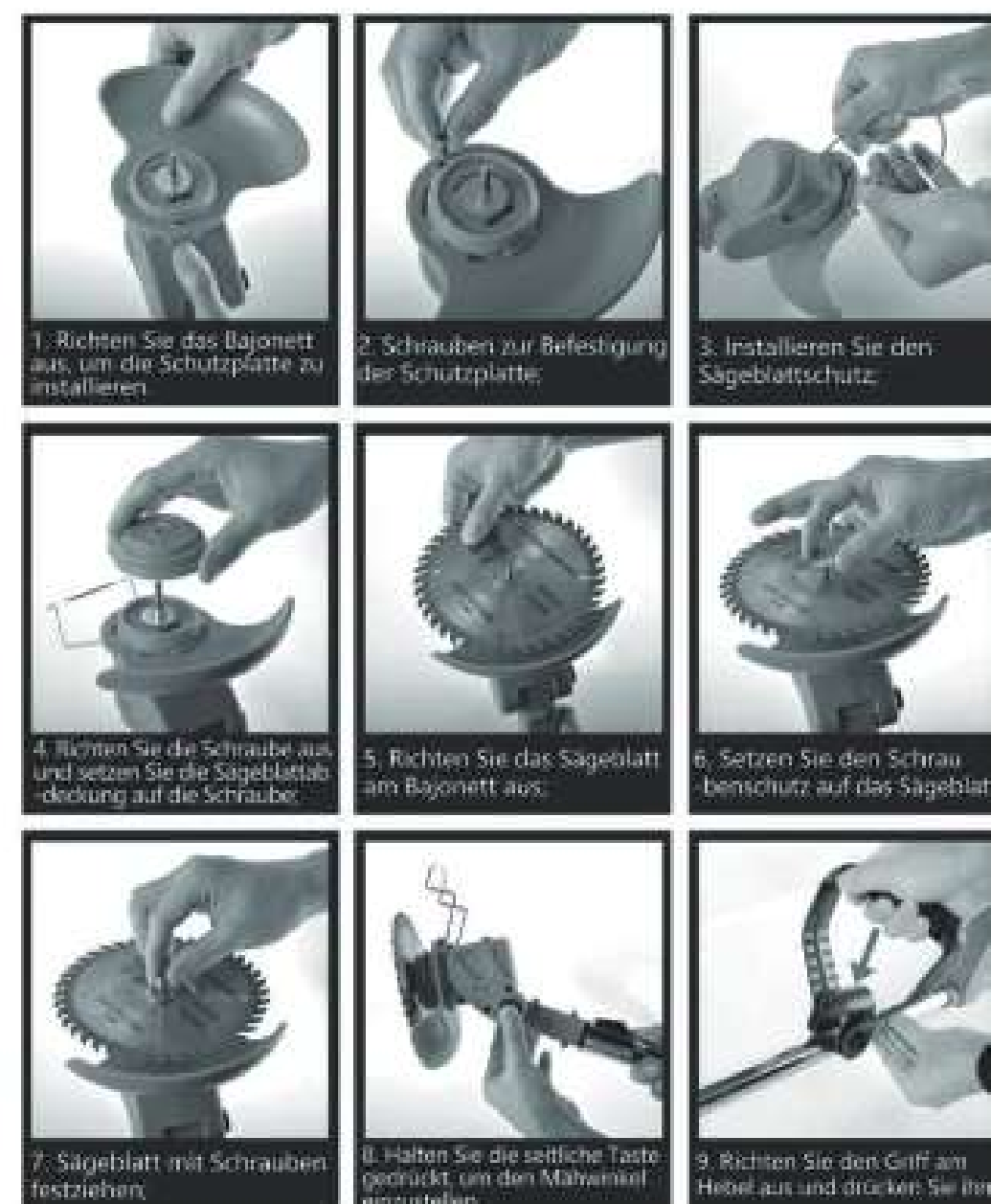
## Installationsanleitung



5

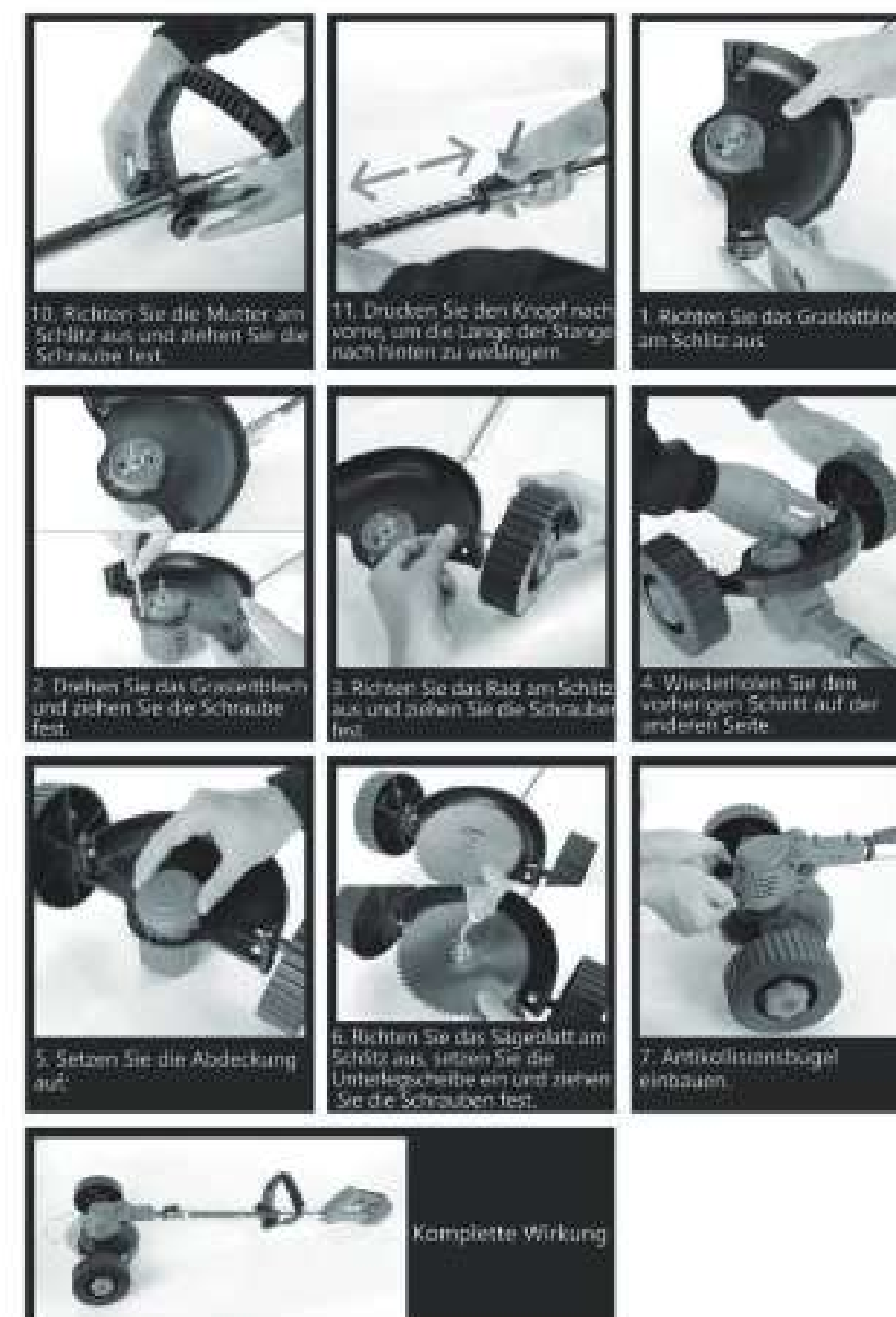
! Diese Maschine ist für den Familiengebrauch geeignet und nur zum Mähen von Gras im Gartenrasen geeignet.

## Installationsanleitung



6

## Installationsanleitung



7

## Instructions

1. Before use, please check whether all parts of the electric mower are complete and whether the installation is firm.
2. The power socket must meet the national standard and must have a protective grounding wire.
3. The plug should be tightly connected with the socket to prevent current leakage.
4. Press the power switch, the electric mower starts to work. Be careful not to touch the blade while it is rotating to avoid danger.
5. After use, please unplug the power plug and store the electric grass trimmer in a dry and ventilated place for the next use.

## Maintenance advice

1. After each use, please unplug the power plug and wipe the shell of the electric lawn trimmer with a soft cloth to remove dust, debris and other debris.
2. Clean the blade regularly to maintain the sharpness and use effect of the blade.
3. Regularly check whether the power cord, plug and other components are damaged, and replace them in time if any problem is found.

The above is the instruction of this product, I hope it can help you use the electric mower better. If you have other questions or suggestions, please feel free to contact us, we will try our best to solve the problem for you.