

## Table saw parts list



- ① Seven-level speed regulating power supply
- ② Table saw body
- ③ Saw blade
- ④ Metal backer
- ⑤ Baffle connecting rod
- ⑥ Backer hand-tightening nut
- ⑦ Backer Screw
- ⑧ Baffle gasket
- ⑨ Bezel thumbscrew
- ⑩ Allen wrench
- ⑪ Angle ruler
- ⑫ Baffle

## Power installation

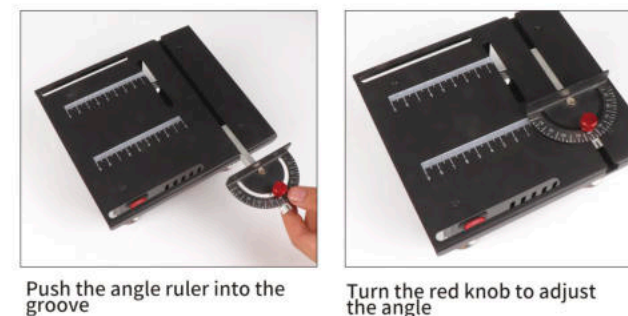


## Installation and replacement of saw blade

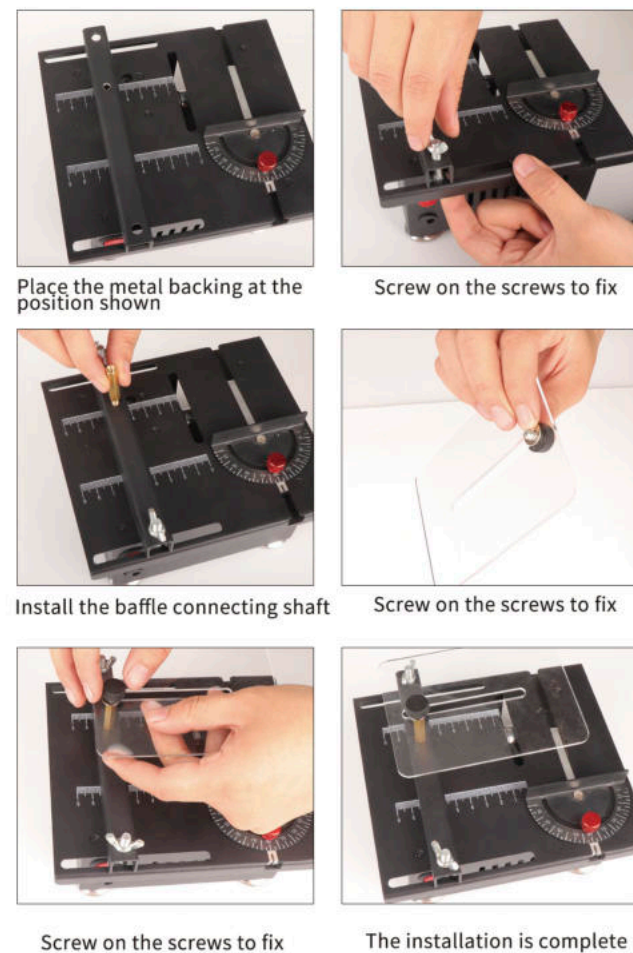


- ⚠ 1. When need to replace the saw blade or do anything action for functional or before using, please keep the supply plug disconnected.
- ⚠ 2. The machine can only work with one function each times you'd like to use it, please take down the accessory after finishing the working.
- ⚠ 3. After sawing, if you don't want to use it, please put down the baffle to prevent damage to the saw blade. Note: please pay attention to this guard when using other functions next time. If you don't remove the saw blade, please don't use it.

## Angle ruler installation



## Backer and baffle installation



## Drill chuck installation



## Sanding disc installation



## Flexible shaft installation



- ⚠ 1. When need to replace the saw blade or do anything action for functional or before using, please keep the supply plug disconnected.
- ⚠ 2. The machine can only work with one function each times you'd like to use it, please take down the accessory after finishing the working.
- ⚠ 3. After sawing, if you don't want to use it, please put down the baffle to prevent damage to the saw blade. Note: please pay attention to this guard when using other functions next time. If you don't remove the saw blade, please don't use it.